



Materials

● "ICO" Chest and "IBC" Bench structures / Lacquered seat "IOP-ASSL"

Fiber-cement HD NT 15mm - Complying with EN 12467 (category A, class 4) : Non-flammable A2-s1,d0 (M0); Rot proof; Frost proof; Insensitive in saline environment. Two-component high performance epoxy assembly resistant to aging and to aggressive environments.

● Wood closure "IOP-ASSB"

Assembly of raw exotic wood boards (species according to stock available - others species on request). Closure without hinges : separate element to lay on. *

● Watertight cover in aluminum sheet metal "IOP-COUV"

Lacquered aluminum th. 3mm or more depending on sizing. Closure without hinges : separate element to lay on. *

Installation

Ground contact on the periphery or in option : Adjustable support pads or feet ; Ground anchor fixing ; hidden castors of handling ; Load distribution to avoid punching of ground waterproofing systems.

Colours et Finishes

Liquid paints : Primer + Polyurethane two-component Finish ; Finishing varnishes (matt, satin, gloss or micronized/sanded) ; All shades on the RAL standard colour chart (except pearly, glittery and fluorescent) ; In options : Shades out of RAL colour chart, specifics finishes: Rust look finish (with IOP-MM or IOP-RUST option), Zinc patina of imitation (with IOP-PZC option).

Ventilation & Sealing

Storage box with perforated bottom for good ventilation ; Watertight closure with the aluminum cover option "IOP-COUV" ; Non-watertight closure with the wooden closure option "IOP-ASSB".



* Discover our STEELAB storage boxes in aluminum sheet metal: Watertight chest with hinged lid Set consisting of a "SAS-CO" storage box, a "SOP-COUV" closure cover and "SOP-CHAR" hinges.

Our IMAGE'IN Chests and Benches are manufactured in France and made to measure, with the dimensions and colors requested.

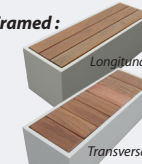
The "ICO" Chest and "IBC" Bench structures"

Chest and bench structures are made of 15mm fiber cement board. This open structure and the closure system are sold separately.

Various solutions are proposed for the closure cover and the seat.

The closure covers and seats

● Framed :



● Emerging :



● Overlapped :



IOP-ASSB - Seat closure in exotic wood boards

The removable closure in exotic wood slats allows you to create a bench with a storage space underneath.

Set composed of an open storage box ICO and a cover IOP-ASSB option.

Non-watertight solution.

The boards can be "**Longitudinal**" or "**Transversal**".

Differents integrations are possible :

● Framed

● Emerging on the sides

● Overlapped on the top

IOP-COUV - Lacquered aluminum cover

The removable lacquered aluminum cover offers a **lightweight** and **waterproof closing** solution for your storage boxes.

The sizing can be adjusted for mixed uses as both chest and bench.

Closure cover available in the color of the storage chest or in another color on request. Set consisting of an open storage box ICO and the closure cover IOP-COUV option.

IOP-ASSL - Lacquered seat in fiber cement

Monobloc set in lacquered fiber cement forming a fixed seat and composed of the IBC seat structure and the IOP-ASSL option.

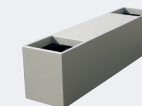
Bench without storage solution.

Solutions combining Planter and Bench



Planter + IOP-ASSB - Seat in exotic wood boards

Made to measure planter from the IMAGE'IN range coupled with a half seat in exotic wood slats with the IOP-ASSB option.



Planter + IOP-ASSL - Lacquered seat in fiber-cement

Made to measure planter(s) from the IMAGE'IN range coupled with a lacquered fiber-cement seat with the IOP-ASSL option.



IMAGE'IN

a brand proposed by
ATELIER SO GREEN

www.ateliersogreen.com
contact@ateliersogreen.com
T - 33 (0)2 47 65 13 62

Manufactured by C.J.C.J. sarl
9, rue Allaire - Z.A. la Canterie
37800 Ste Maure de Touraine
FRANCE