

Selection

At no extra cost



Colours



All shades on the colour chart are RAL standard. Other shades possible on request, by colour matching your sample.

The RAL colour chart is not associated with a particular brand. Find it in all DIY/paint shops, on sale and available for consultation on the internet (illustration below).

The depiction of the colours on the screen or on paper is not always true to life. It is better to consult a standardised colour chart.

€ 0

Color chart sold
€ 18 excl. VAT
Deductible amount of
your planters order

Finishes



Choose your finish: Matt, Satin, Gloss or Micronised (also called Sanded).

Matt is, by its nature, more fragile. The micronised finish, by virtue of its depth, is less liable to scratching; it is harder to clean (often used for street furniture).

According to the base colour, the matt and micronised finishes may very slightly lighten the shade. In particular: gloss finish on a very dark shade – Consult us.

€ 0

Options

IOP-MVP

Reduced price paint

Simple painted finish without protective coat; exists in matt, satin, gloss or micronised finishes.

Ideal for reducing the budget when the quality of the finish is not vital.

Without a protective coat, the paint is more liable to scratching and deterioration due to UV rays.

- € 30

Excl. tax / U

IOP-PZC

Zinc patina



Hand-finished shine imitating the appearance of zinc.
With satin finish.

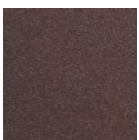
These patina being the result of the applicator's labour, they will vary endlessly and it will never be possible to reproduce them exactly. The illustration opposite and the photos displayed on our sites and in our catalogues are just a rough guide.

+ € 30 - 60

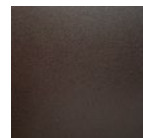
Excl. tax / U

acc. to size of container

RUST LOOK



"Marron Oxyde Urbain" finishing typed rust look.
With micronized varnish finish.



Possible variant with added value: "Metallic Brown" (lightly glittery automotive shade): IOP-MM.

Pictures purely indicative.

Marron Oxyde Urbain :
€ 0

IOP-MM :

+ € 30 Excl. tax / U

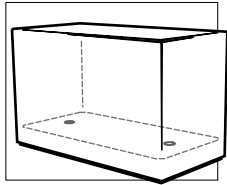
RAL 1000 Green Beige	RAL 1001 Beige	RAL 1002 Sand Yellow	RAL 1003 Signal Yellow	RAL 1004 Golden Yellow	RAL 1005 Honey Yellow
RAL 1006 Maize Yellow	RAL 1007 Doffodil Yellow	RAL 1011 Brown Beige	RAL 1012 Lemon Yellow	RAL 1013 Oyster White	RAL 1014 Ivory
RAL 1015 Light Ivory	RAL 1016 Sulfur Yellow	RAL 1017 Saffron Yellow	RAL 1018 Zinc Yellow	RAL 1019 Grey Beige	RAL 1020 Olive Yellow
RAL 1021 Colza Yellow	RAL 1023 Traffic yellow	RAL 1024 Ochre Yellow	RAL 1027 Curry	RAL 1028 Melon Yellow	
RAL 1032 Broom Yellow	RAL 1033 Dahlia Yellow	RAL 1034 Pastel Yellow	RAL 1037 Sun Yellow		
RAL 2000 Yellow Orange	RAL 2001 Red Orange	RAL 2002 Vermilion	RAL 2003 Pastel Orange	RAL 2004 Pure Orange	RAL 2008 Bright Red Orange
RAL 2009 Traffic Orange	RAL 2010 Signal Orange	RAL 2011 Deep Orange	RAL 2012 Salmon Orange		
RAL 3000 Flame Red	RAL 3001 Signal Red	RAL 3002 Carmine Red	RAL 3003 Ruby red	RAL 3004 Purple Red	RAL 3005 Wine Red
RAL 3007 Black Red	RAL 3009 Oxyde Red	RAL 3011 Brown Red	RAL 3012 Beige Red	RAL 3013 Tomato Red	RAL 3014 Antique Pink
RAL 3015 Light Pink	RAL 3016 Coral Red	RAL 3017 Rose	RAL 3018 Strawberry Red	RAL 3020 Traffic Red	RAL 3022 Salmon Pink
RAL 3027 Raspberry Red	RAL 3028 Pure Red	RAL 3031 Orient Red			
RAL 4001 Red Lilac	RAL 4002 Red Violet	RAL 4003 Heather Violet	RAL 4004 Claret Violet	RAL 4005 Blue Lilac	RAL 4006 Traffic Purple
RAL 4007 Purple Violet	RAL 4008 Signal Violet	RAL 4009 Pastel Violet	RAL 4010 Telemagenta		

RAL 5000 Violet Blue	RAL 5001 Green Blue	RAL 5002 Ultramarine Blue	RAL 5003 Sapphire Blue	RAL 5004 Black Blue	RAL 5005 Signal Blue
RAL 5007 Brilliant Blue	RAL 5008 Grey Blue	RAL 5009 Azure Blue	RAL 5010 Gentian Blue	RAL 5011 Steel Blue	RAL 5012 Light Blue
RAL 5013 Cobalt Blue	RAL 5014 Pigeon Blue	RAL 5015 Sky Blue	RAL 5017 Traffic Blue	RAL 5018 Turquoise Blue	RAL 5019 Capri Blue
RAL 5020 Ocean Blue	RAL 5021 Water Blue	RAL 5022 Night Blue	RAL 5023 Distant Blue	RAL 5024 Pastel Blue	



The depiction of the colours on the screen or on printing is not always true to life. It is better to consult a paper standardised colour chart.

RAL 7000 Squirrel Grey	RAL 7001 Silver Grey	RAL 7002 Olive Grey	RAL 7003 Moss Grey	RAL 7004 Signal Grey	RAL 7005 Mouse grey
RAL 7006 Beige Grey	RAL 7008 Khaki Grey	RAL 7009 Green Grey	RAL 7010 Tarpaulin Grey	RAL 7011 Iron Grey	RAL 7012 Basalt Grey
RAL 7013 Brown Grey	RAL 7015 Slate Grey	RAL 7016 Anthracite Grey	RAL 7021 Black Grey	RAL 7022 Umbra Grey	RAL 7023 Concrete Grey
RAL 7024 Graphite Grey	RAL 7026 Granite Grey	RAL 7030 Stone Grey	RAL 7031 Blue Grey	RAL 7032 Pebble Grey	RAL 7033 Cement Grey
RAL 7034 Yellow Grey	RAL 7035 Light Grey	RAL 7036 Platinum Grey	RAL 7037 Dusty Grey	RAL 7038 Agate Grey	RAL 7039 Quartz Grey
RAL 7040 Window Grey	RAL 7042 Traffic Grey A	RAL 7043 Traffic Grey B	RAL 7044 Silk Grey	RAL 7045 Telegrey 1	RAL 7046 Telegrey 2
RAL 7047 Telegrey 4					
RAL 8000 Green Brown	RAL 8001 Ochre Brown	RAL 8002 Signal Brown	RAL 8003 Clay Brown	RAL 8004 Copper brown	RAL 8007 Fawn Brown
RAL 8008 Olive brown	RAL 8011 Nut Brown	RAL 8012 Red Brown	RAL 8014 Sepia Brown	RAL 8015 Chestnut Brown	RAL 8016 Mahogany Brown
RAL 8017 Chocolate Brown	RAL 8019 Grey Brown	RAL 8022 Black Brown	RAL 8023 Orange Brown	RAL 8024 Beige Brown	RAL 8025 Pale Brown
RAL 8028 Terra Brown					
RAL 9001 Cream	RAL 9002 Grey White	RAL 9003 Signal White	RAL 9004 Signal Black	RAL 9005 Jet Black	RAL 9006 White Aluminium
RAL 9007 Grey Aluminium	RAL 9010 Pure White	RAL 9011 Graphite Black	RAL 9016 Traffic White	RAL 9017 Traffic Black	RAL 9018 Papyrus White



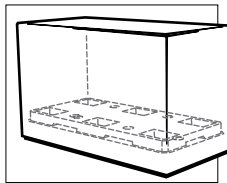
Draining base

Perforated base : 40mm holes.
Excess water drains off underneath the container.

Allows good drainage of rainwater and after watering; the ideal solution for your exterior containers.

For exterior use only.

€ 0



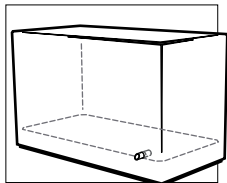
Water reservoir with Horticultural system

Allows the creation of a water reservoir integrated in the drainage section.
Overflow drainage underneath the container.

For a reservoir free from the risk of frost.

Provide the option Horticultural system :
IOP-SH or IOP-SH60.

acc.to capacity
IOP-SH : € 30
IOP-SH60 : € 45
Excl tax/ Planter



Drainage via weep hole

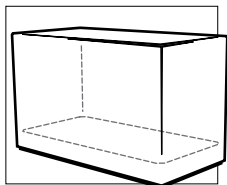
Watertight base with overflow drainage via a weep hole on one side of the container.
Can be connected to a rainwater system.

Ideal when water drainage is not possible underneath the container. Allows overflow drainage from a specific point. Possibility of reservoir with IOP-SH.

Evacuation by weep hole on one side can form dirt on the planter over time.
Less durable solution than a draining base (risk of becoming clogged over time).

IOP-BARB : € 30
Excl tax/ Planter
(without reservoir)

With reservoir,
add IOP-SH : € 30



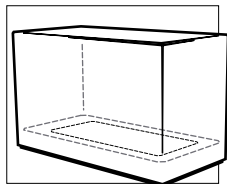
Watertight base

Watertight base for "Indoor" container.
Requires IOP-ER option :
Reinforced sealing.

Control watering using the Water Level Indicator option (IOP-INE).

Recommended for interior use only.

IOP-ER :
€ 20 - 60 Excl tax/
Container
acc. to size of container

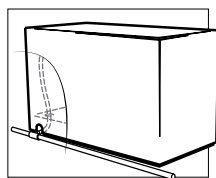


Open base

Wide openwork bottom to allow exchanges with the soil.

Ideal for Allotment raised bed garden.

0 €



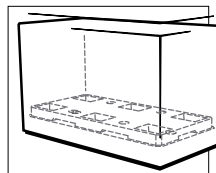
Perfos

Fittings for putting in automatic watering and / or lighting systems.

Simply on request, we can adapt the containers to suit your requirements: perforations, cut-outs, waterproof risers, etc.

Contact us when you place your order.

€ 0



IOP-SH

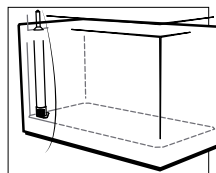
Horticultural system.

Drainage system offering a water reservoir.
IOP-SH : 5L/m² reservoir, expanded polystyrene sheet – 40mm thick.
IOP-SH60 : 6cm of reservoir, approx. 23L/m² when full of agregats, recycled PEHD sheet – 60mm thick.

IOP-SH replaces the drainage section made of clay pellets / pozzolana. Cover with geotextile before adding substrate.
IOP-SH60 as to be full of clay pellets (approx. 45L/m²). It can be used with a water level indicator IOP-INE.

€ 30 Excl. tax
/ container

€ 45 Excl. tax
/ container



IOP-INE

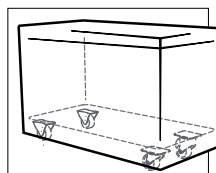
40 / 50 / 60 / 70
/ 80 / 90 / 100

Water level indicator.

For pots used indoors which have a watertight base. The float indicates the water level at the bottom of the container. It allows the monitoring of watering.

Suitable for Indoor plant containers which have a watertight base. Price varies according to the height of the container.

€ 22 – 40 Excl. tax
/ container
acc. to height of container



IOP-RL

50 / 65 / 100FC

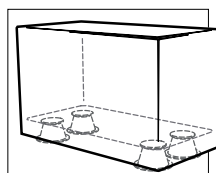
Installation on casters for handling.

Concealed under the container, the casters are not visible. They allow the plant container to be moved from time to time. As they are concealed, the casters cannot be fitted with brakes. If needed, provide a brake by retractable foot in option : IOP-PFE.

May only be used on a flat, smooth and firm surface.
Beware of the risk of instability on <40cm width containers. Check the compatibility with the intended use; contact us.

€ 100 – 160 Excl. tax
/ container acc. to size

With brakes IOP-PFE :
+ € 60 – 80 Excl. tax
/ container acc. to size



IOP-PLOT

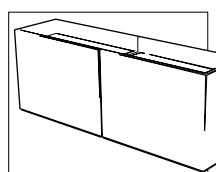
28-40 / 40-55 /
85-140 ...

Installation on adjustable PVC pedestals.

For a well-balanced installation, with a uniformly distributed load. Allows water to flow underneath the container, a good ventilation and also allows adjustments in the alignment of linear arrangements of containers.

Suitable for > 40 cm wide containers. Suggested ranges of adjustment : 12 / 15 / or 55 mm. Others on request.

€ 50 – 60 Excl. tax
/ container
acc. to std ranges, others on request



IOP-PR

Installation on adjustable feet.

For installation on sloping ground.

Replaces IOP-PLOT for < 40 cm wide planters.

€ 100 – 120 Excl. tax
/ container acc. to size & slope

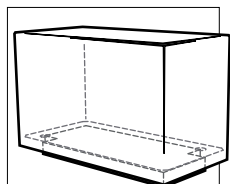
IOP-CLS

Lowered lateral partition(s)

Ideal for forming linears with a uniform mulching surface.
To adjust the alignment of the planters, add the IOP-PLOT option.

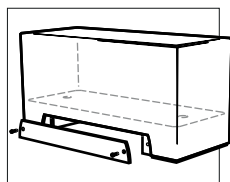
Before filling, plan to lay a geotextile felt straddling the two bins at the level of the lowered partitions.

€ 40 Excl. tax
/ container



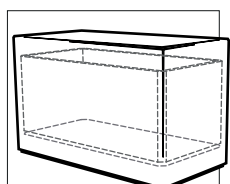
IOP-PSX

Installation on extruded polystyrene panel



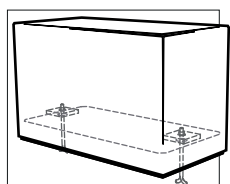
IOP-MTP

Handling by forklift



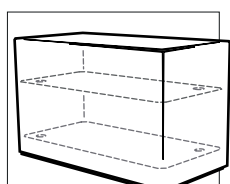
IOP-ISOL

Wall insulation (PSX)



IOP-TES

Hole and crosspiece for secure fixing



IOP-TEL

Hole and crosspiece for lateral fixing



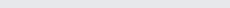
IOP-FR *

Raised base



IOP-PSE **

Useful height reduced by an expanded polystyrene filling



IOP-ARD

Edges and rounded corners

Installation on polystyrene weight distribution buffer. Avoids perforation if installing directly on waterproofing.

Removable trap door concealing an access underneath the container for handling by forklift. Ideal for moving large containers from time to time.

Fibre-cement already has a low thermal exchange coefficient. However, in areas with extremes of climate, wall insulation can be added.

Allows the passage and fixing of a previously ground-secured, threaded rod at the base of the container.

For the fixing of containers to each other or to a wall.

Allows a reduction in the volume and weight of the soil when plants do not require the whole capacity.

Replaces edges and chamfered angles used in standard design.

Check the admissible load per m².

Handle with care!
The loaded container is subject to great stresses when being moved.

Wall insulation only slows down the variations in temperature in the clump of soil. Provide protection for your plantation.

The tightening process must be carried out with care to avoid the risk of damaging the container.

** If installed on casters, feet, pads... ** cost acc.to container size and height to fill

Ideal for use in nurseries or schools to prevent the risk of injury.

€ 20 - 60 Excl. tax
acc. to size of container

€ 125 Excl. tax/per
container

€ 40 - 60 Excl. tax
acc. to size of
container

€ 30 Excl. tax/per
container

* € 20 - 60 Excl. tax
acc. to size of container

€ 20 Excl. tax /per
container



PSM

Made-to-measure pallet for the packaging of large garden containers.



When packing is not possible on standard pallets: 80x120 / 100x120 or 120x120



€ 15 Excl. Tax / Pallet

Delivery by courier



Kerbside delivery by lorry equipped with a tailgate for unloading pallets next to the lorry.

Delivery by courier is possible for up to three 80x120 pallets or two 120x120 pallets; over that, delivery is by freight.


The delivery point must be accessible for a truck (12-19To/40m3). Delivery from monday to Friday, at the day, without specific schedule. Pallets are unloaded next to the lorry. Delivery does not include the installation of products.

Price on demand
(varies according to destination, weight and volume of delivery)

Delivery by freight



Kerbside delivery by tractor-trailer without unloading. Delivery date and time slot will be specified.

For deliveries of more than 2-3 pallets.  If you do not have your own means of unloading, ask for the tailgate option!

The delivery point must be accessible for a tractor-trailer (80m3). You must provide your own means of unloading (platform, loader, manuscopic, crane, etc.)

Price on demand
(varies according to destination, weight and volume of delivery)

Tailgate option

For freight deliveries: lorry equipped with a tailgate for unloading pallets next to the vehicle.

If you do not have a forklift, think about asking for delivery by a lorry equipped with one.

For deliveries by courier: € 0
By freight, to mainland France: € 50 Excl. tax / lorry
By freight, outside mainland France: approx. € 150 - 200 Excl. tax / lorry

Delivery date on appointment

For deliveries by courier: an SMS is sent asking you to call the carrier to fix a time.

Ideal if there is not always somebody around at the location to take delivery.

Check your messaging service! You will be automatically contacted by SMS ; it's up to you to call back the carrier. Fixing a date involves an additional delay of at least 24 hours ; and an all-day availability (no specific time slot).

€ 0

Scheduled delivery

For delivery on a specified date.

Once your order is ready to be dispatched, specify your desired delivery date.

Minimum request 72 hours in advance. Delivery round on the day; fixed times are not possible.

+ 50 %

ATTENTION

All deliveries are made from monday to friday. The pallets unloading is included only with a "delivery by courier" or with "tailgate option". In that case, pallets are unloaded next to the lorry. Depalletization, handling up to the installation site, unpacking and putting into service of the products are not included in the delivery service. The carriers are not responsible for nonreturnable pallets and packaging waste.

The feasibility of non-standard delivery has to be study and costing from a service provider.