



Colours & Finishes

Water management

Options

Delivery

## Selection

At no extra cost



### Colours



All shades on the colour chart are RAL standard. Other shades possible on request, by colour matching your sample.

The RAL colour chart is not associated with a particular brand. Find it in all DIY/paint shops, on sale and available for consultation on the internet (illustration below).

The depiction of the colours on the screen or on paper is not always true to life. It is better to consult a standardised colour chart.

€ 0

Color chart sold  
€ 18 excl. VAT  
Deductible amount of  
your planters order

### Finishes



Choose your finish: Matt, Satin, Gloss or Micronised (also called Sanded).

Matt is, by its nature, more fragile. The micronised finish, by virtue of its depth, is less liable to scratching; it is harder to clean (often used for street furniture).

According to the base colour, the matt and micronised finishes may very slightly lighten the shade. In particular: gloss finish on a very dark shade – Consult us.

€ 0

## Options

### IOP-MVP

Reduced price paint

Simple painted finish without protective coat; exists in matt, satin, gloss or micronised finishes.

Ideal for reducing the budget when the quality of the finish is not vital.

Without a protective coat, the paint is more liable to scratching and deterioration due to UV rays.

- € 30

Excl. tax / U

### IOP-PZC

Zinc patina



Hand-finished shine imitating the appearance of zinc.  
With satin finish.

These patina being the result of the applicator's labour, they will vary endlessly and it will never be possible to reproduce them exactly. The illustration opposite and the photos displayed on our sites and in our catalogues are just a rough guide.

+ € 40 - 80

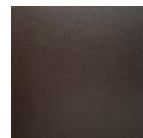
Excl. tax / U

acc. to size of container

### RUST LOOK



"Marron Oxyde Urbain" finishing typed rust look.  
With micronized varnish finish.



Possible variant with added value: "Metallic Brown" (lightly glittery automotive shade): IOP-MM.

Pictures purely indicative.

Marron Oxyde Urbain :  
€ 0

IOP-MM :

+ € 30 Excl. tax / U

<b>RAL 1000</b> Green Beige	<b>RAL 1001</b> Beige	<b>RAL 1002</b> Sand Yellow	<b>RAL 1003</b> Signal Yellow	<b>RAL 1004</b> Golden Yellow	<b>RAL 1005</b> Honey Yellow
<b>RAL 1006</b> Maize Yellow	<b>RAL 1007</b> Doffodil Yellow	<b>RAL 1011</b> Brown Beige	<b>RAL 1012</b> Lemon Yellow	<b>RAL 1013</b> Oyster White	<b>RAL 1014</b> Ivory
<b>RAL 1015</b> Light Ivory	<b>RAL 1016</b> Sulfur Yellow	<b>RAL 1017</b> Saffron Yellow	<b>RAL 1018</b> Zinc Yellow	<b>RAL 1019</b> Grey Beige	<b>RAL 1020</b> Olive Yellow
<b>RAL 1021</b> Colza Yellow	<b>RAL 1023</b> Traffic yellow	<b>RAL 1024</b> Ochre Yellow	<b>RAL 1027</b> Curry	<b>RAL 1028</b> Melon Yellow	
<b>RAL 1032</b> Broom Yellow	<b>RAL 1033</b> Dahlia Yellow	<b>RAL 1034</b> Pastel Yellow	<b>RAL 1037</b> Sun Yellow		
<b>RAL 2000</b> Yellow Orange	<b>RAL 2001</b> Red Orange	<b>RAL 2002</b> Vermilion	<b>RAL 2003</b> Pastel Orange	<b>RAL 2004</b> Pure Orange	<b>RAL 2008</b> Bright Red Orange
<b>RAL 2009</b> Traffic Orange	<b>RAL 2010</b> Signal Orange	<b>RAL 2011</b> Deep Orange	<b>RAL 2012</b> Salmon Orange		
<b>RAL 3000</b> Flame Red	<b>RAL 3001</b> Signal Red	<b>RAL 3002</b> Carmine Red	<b>RAL 3003</b> Ruby red	<b>RAL 3004</b> Purple Red	<b>RAL 3005</b> Wine Red
<b>RAL 3007</b> Black Red	<b>RAL 3009</b> Oxyde Red	<b>RAL 3011</b> Brown Red	<b>RAL 3012</b> Beige Red	<b>RAL 3013</b> Tomato Red	<b>RAL 3014</b> Antique Pink
<b>RAL 3015</b> Light Pink	<b>RAL 3016</b> Coral Red	<b>RAL 3017</b> Rose	<b>RAL 3018</b> Strawberry Red	<b>RAL 3020</b> Traffic Red	<b>RAL 3022</b> Salmon Pink
<b>RAL 3027</b> Raspberry Red	<b>RAL 3028</b> Pure Red	<b>RAL 3031</b> Orient Red			
<b>RAL 4001</b> Red Lilac	<b>RAL 4002</b> Red Violet	<b>RAL 4003</b> Heather Violet	<b>RAL 4004</b> Claret Violet	<b>RAL 4005</b> Blue Lilac	<b>RAL 4006</b> Traffic Purple
<b>RAL 4007</b> Purple Violet	<b>RAL 4008</b> Signal Violet	<b>RAL 4009</b> Pastel Violet	<b>RAL 4010</b> Telemagenta		

<b>RAL 5000</b> Violet Blue	<b>RAL 5001</b> Green Blue	<b>RAL 5002</b> Ultramarine Blue	<b>RAL 5003</b> Sapphire Blue	<b>RAL 5004</b> Black Blue	<b>RAL 5005</b> Signal Blue
<b>RAL 5007</b> Brilliant Blue	<b>RAL 5008</b> Grey Blue	<b>RAL 5009</b> Azure Blue	<b>RAL 5010</b> Gentian Blue	<b>RAL 5011</b> Steel Blue	<b>RAL 5012</b> Light Blue
<b>RAL 5013</b> Cobalt Blue	<b>RAL 5014</b> Pigeon Blue	<b>RAL 5015</b> Sky Blue	<b>RAL 5017</b> Traffic Blue	<b>RAL 5018</b> Turquoise Blue	<b>RAL 5019</b> Capri Blue
<b>RAL 5020</b> Ocean Blue	<b>RAL 5021</b> Water Blue	<b>RAL 5022</b> Night Blue	<b>RAL 5023</b> Distant Blue	<b>RAL 5024</b> Pastel Blue	



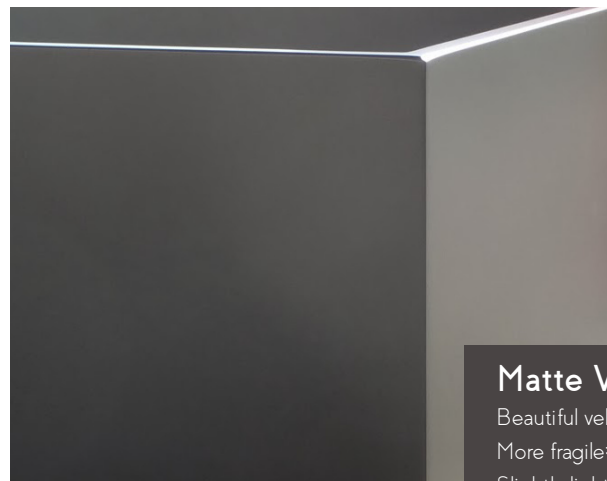
The depiction of the colours on the screen or on printing is not always true to life. It is better to consult a paper standardised colour chart.

<b>RAL 7000</b> Squirrel Grey	<b>RAL 7001</b> Silver Grey	<b>RAL 7002</b> Olive Grey	<b>RAL 7003</b> Moss Grey	<b>RAL 7004</b> Signal Grey	<b>RAL 7005</b> Mouse grey
<b>RAL 7006</b> Beige Grey	<b>RAL 7008</b> Khaki Grey	<b>RAL 7009</b> Green Grey	<b>RAL 7010</b> Tarpaulin Grey	<b>RAL 7011</b> Iron Grey	<b>RAL 7012</b> Basalt Grey
<b>RAL 7013</b> Brown Grey	<b>RAL 7015</b> Slate Grey	<b>RAL 7016</b> Anthracite Grey	<b>RAL 7021</b> Black Grey	<b>RAL 7022</b> Umbra Grey	<b>RAL 7023</b> Concrete Grey
<b>RAL 7024</b> Graphite Grey	<b>RAL 7026</b> Granite Grey	<b>RAL 7030</b> Stone Grey	<b>RAL 7031</b> Blue Grey	<b>RAL 7032</b> Pebble Grey	<b>RAL 7033</b> Cement Grey
<b>RAL 7034</b> Yellow Grey	<b>RAL 7035</b> Light Grey	<b>RAL 7036</b> Platinum Grey	<b>RAL 7037</b> Dusty Grey	<b>RAL 7038</b> Agate Grey	<b>RAL 7039</b> Quartz Grey
<b>RAL 7040</b> Window Grey	<b>RAL 7042</b> Traffic Grey A	<b>RAL 7043</b> Traffic Grey B	<b>RAL 7044</b> Silk Grey	<b>RAL 7045</b> Telegrey 1	<b>RAL 7046</b> Telegrey 2
<b>RAL 7047</b> Telegrey 4					
<b>RAL 8000</b> Green Brown	<b>RAL 8001</b> Ochre Brown	<b>RAL 8002</b> Signal Brown	<b>RAL 8003</b> Clay Brown	<b>RAL 8004</b> Copper brown	<b>RAL 8007</b> Fawn Brown
<b>RAL 8008</b> Olive brown	<b>RAL 8011</b> Nut Brown	<b>RAL 8012</b> Red Brown	<b>RAL 8014</b> Sepia Brown	<b>RAL 8015</b> Chestnut Brown	<b>RAL 8016</b> Mahogany Brown
<b>RAL 8017</b> Chocolate Brown	<b>RAL 8019</b> Grey Brown	<b>RAL 8022</b> Black Brown	<b>RAL 8023</b> Orange Brown	<b>RAL 8024</b> Beige Brown	<b>RAL 8025</b> Pale Brown
<b>RAL 8028</b> Terra Brown					
<b>RAL 9001</b> Cream	<b>RAL 9002</b> Grey White	<b>RAL 9003</b> Signal White	<b>RAL 9004</b> Signal Black	<b>RAL 9005</b> Jet Black	<b>RAL 9006</b> White Aluminium
<b>RAL 9007</b> Grey Aluminium	<b>RAL 9010</b> Pure White	<b>RAL 9011</b> Graphite Black	<b>RAL 9016</b> Traffic White	<b>RAL 9017</b> Traffic Black	<b>RAL 9018</b> Papyrus White



### Glossy Varnish

Nice mirror effect  
Not recommended for shades that are too dark



### Matte Varnish

Beautiful velvety effect  
More fragile: more delicate maintenance  
Slightly lightens the shade



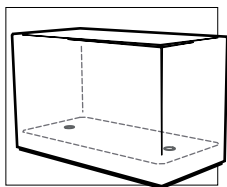
### Micronized Varnish (sanded)

Textured effect: contains small grains  
More resistant to scratching  
Slightly lightens the shade



### Satin Varnish

The must-have !  
Classic and consensual finish



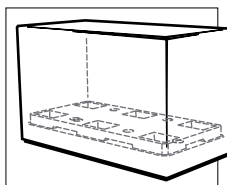
## Draining base

Perforated base : 40mm holes.  
Excess water drains off underneath the container.

Allows good drainage of rainwater and after watering; the ideal solution for your exterior containers.

For exterior use only.

€ 0



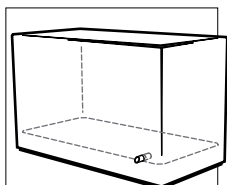
## Water reservoir with Horticultural system

Allows the creation of a water reservoir integrated in the drainage section.  
Overflow drainage underneath the container.

For a reservoir free from the risk of frost.

Provide the option Horticultural system :  
IOP-SH or IOP-SH60.

acc.to capacity  
IOP-SH : € 40  
IOP-SH40 : € 50  
IOP-SH60 : € 60  
Excl tax/ Planter



## Drainage via weep hole

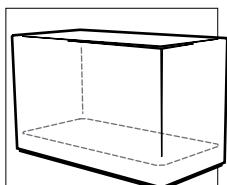
Watertight base with overflow drainage via a weep hole on one side of the container.  
Can be connected to a rainwater system.

Ideal when water drainage is not possible underneath the container. Allows overflow drainage from a specific point. Possibility of reservoir with IOP-SH.

Evacuation by weep hole on one side can form dirt on the planter over time.  
Less durable solution than a draining base (risk of becoming clogged over time).

IOP-BARB : € 40  
Excl tax/ Planter  
(without reservoir)

With reservoir,  
add IOP-SH : € 40



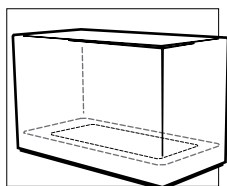
## Watertight base

Watertight base for "Indoor" container.  
Requires IOP-ER option :  
Reinforced sealing.

Control watering using the Water Level Indicator option ( IOP-INE).

Recommended for interior use only.

IOP-ER :  
€ 30 - 60 Excl tax/  
Container  
acc. to size of container

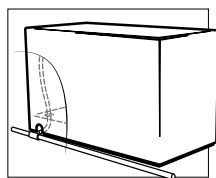


## Open base

Wide openwork bottom to allow exchanges with the soil.

Ideal for raised bed garden.

IOP-FO : € 20  
Excl tax/ Planter



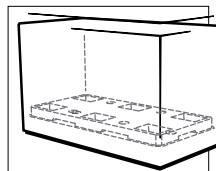
## IOP-PERFO

Fittings for putting in automatic watering and / or lighting systems.

Simply on request, we can adapt the containers to suit your requirements: perforations, cut-outs, waterproof risers, etc.

Contact us when you place your order.

IOP-PERFO: € 10 - 30  
Excl tax/ Planter  
depending on complexity



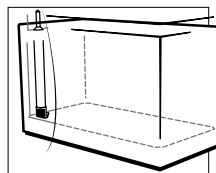
## IOP-SH IOP-SH40 IOP-SH60

Horticultural system.

Drainage system offering a water reservoir.  
IOP-SH: 5L/m<sup>2</sup> reservoir, EPS panel, 40mm thick.  
IOP-SH40: 8,7L/m<sup>2</sup> or 16L/m<sup>2</sup> reservoir according to the installation direction, recycled PEHD panel, 40mm thick.  
IOP-SH60: 6cm of reservoir, approx. 23L/m<sup>2</sup> when full of agregats, recycled PEHD panel, 60mm thick.

IOP-SH & IOP-SH40 replace the drainage section made of clay pellets / pozzolana. Cover with geotextile before adding substrate. IOP-SH60 as to be full of clay pellets (approx. 45L/m<sup>2</sup>). It can be used with a water level indicator IOP-INE.

IOP-SH: € 40  
Excl. tax/ container  
IOP-SH40: € 50  
Excl. tax/ container  
IOP-SH60: € 60  
Excl. tax/ container



## IOP-INE

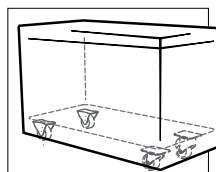
40 / 50 / 60 / 70  
/ 80 / 90 / 100

Water level indicator.

For pots used indoors which have a watertight base. The float indicates the water level at the bottom of the container. It allows the monitoring of watering.

Suitable for Indoor plant containers which have a watertight base. Price varies according to the height of the container.

€ 25 – 43 Excl. tax  
/ container  
acc. to height of container



## IOP-RL

50 / 65 / 100FC

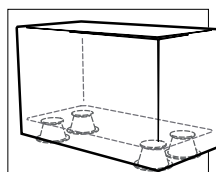
Installation on casters for handling.

Concealed under the container, the casters are not visible. They allow the plant container to be moved from time to time. As they are concealed, the casters cannot be fitted with brakes. If needed, provide a brake by retractable foot in option : IOP-PFE.

May only be used on a flat, smooth and firm surface.  
Beware of the risk of instability on <40cm width containers. Check the compatibility with the intended use; contact us.

€ 110 – 170 Excl. tax  
/ container acc. to size

With brakes IOP-PFE :  
+ € 80 – 100 Excl. tax  
/ container acc. to size



## IOP-PLOT

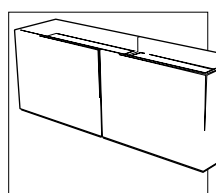
28-40 / 40-55 /  
85-140 ...

Installation on adjustable PVC pedestals.

For a well-balanced installation, with a uniformly distributed load. Allows water to flow underneath the container, a good ventilation and also allows adjustments in the alignment of linear arrangements of containers.

Suitable for > 40 cm wide containers. Suggested ranges of adjustment : 12 / 15 / or 55 mm. Others on request.

€ 55 – 65 Excl. tax  
/ container  
acc. to std ranges, others on request



## IOP-PR

Installation on adjustable feet.

For installation on sloping ground.

Replaces IOP-PLOT for < 40 cm wide planters.

€ 120 – 140 Excl. tax  
/ container acc. to size & slope



## IOP-CLS

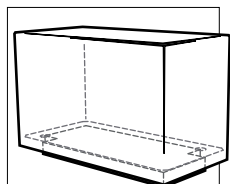
Lowered lateral partition(s)

Ideal for forming linears with a uniform mulching surface.  
To adjust the alignment of the planters, add the IOP-PLOT option.

Before filling, plan to lay a geotextile felt straddling the two bins at the level of the lowered partitions.

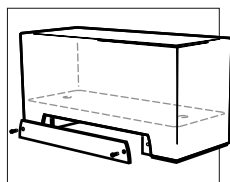
€ 40 Excl. tax  
/ container





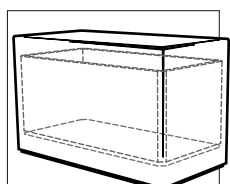
### IOP-PSX

Installation on extruded polystyrene panel



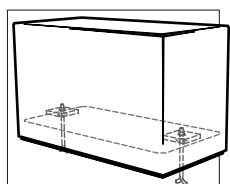
### IOP-MTP

Handling by forklift



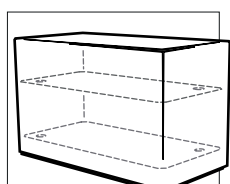
### IOP-ISOL

Wall insulation (PSX)



### IOP-TES

Hole and crosspiece for secure fixing



### IOP-TEL

Hole and crosspiece for lateral fixing



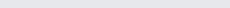
### IOP-FR \*

Raised base



### IOP-PSE \*\*

Useful height reduced by an expanded polystyrene filling



### IOP-ARD

Edges and rounded corners

Installation on polystyrene weight distribution buffer. Avoids perforation if installing directly on waterproofing.

Removable trap door concealing an access underneath the container for handling by forklift. Ideal for moving large containers from time to time.

Fibre-cement already has a low thermal exchange coefficient. However, in areas with extremes of climate, wall insulation can be added.

Allows the passage and fixing of a previously ground-secured, threaded rod at the base of the container.

For the fixing of containers to each other or to a wall.

Allows a reduction in the volume and weight of the soil when plants do not require the whole capacity.

Replaces edges and chamfered angles used in standard design.

Check the admissible load per m<sup>2</sup>.

Handle with care!  
The loaded container is subject to great stresses when being moved.

Wall insulation only slows down the variations in temperature in the clump of soil. Provide protection for your plantation.

The tightening process must be carried out with care to avoid the risk of damaging the container.

\*\* If installed on casters, feet, pads... \*\* cost acc. to container size and height to fill

Ideal for use in nurseries or schools to prevent the risk of injury.

€ 30 - 80 Excl. tax/per container  
acc. to size of container

€ 160 Excl. tax/per container

€ 40 - 90 Excl. tax/per container  
acc. to size of container

€ 30 - 50 Excl. tax/per container

\* € 20 - 60 Excl. tax  
acc. to size of container

€ 20 Excl. tax /per container



## PSM

Made-to-measure pallet for the packaging of large garden containers.



When packing is not possible on standard pallets: 80x120 / 100x120 or 120x120



€ 15 Excl. Tax / Pallet

## Delivery by courier



Kerbside delivery by lorry equipped with a tailgate for unloading pallets next to the lorry.

Delivery by courier is possible for up to three 80x120 pallets or two 120x120 pallets; over that, delivery is by freight.


The delivery point must be accessible for a truck (12-19To/40m3). Delivery from monday to Friday, at the day, without specific schedule. Pallets are unloaded next to the lorry. Delivery does not include the installation of products.

Price on demand  
(varies according to destination, weight and volume of delivery)

## Delivery by freight



Kerbside delivery by tractor-trailer without unloading. Delivery date and time slot will be specified.

For deliveries of more than 2-3 pallets.  If you do not have your own means of unloading, ask for the tailgate option!

The delivery point must be accessible for a tractor-trailer (80m3). You must provide your own means of unloading (platform, loader, manuscopic, crane, etc.)

Price on demand  
(varies according to destination, weight and volume of delivery)

## Tailgate option

For freight deliveries: lorry equipped with a tailgate for unloading pallets next to the vehicle.

If you do not have a forklift, think about asking for delivery by a lorry equipped with one.

For deliveries by courier: € 0  
By freight, to mainland France: € 50 Excl. tax / lorry  
By freight, outside mainland France: approx. € 150 - 200 Excl. tax / lorry

## Delivery date on appointment

For deliveries by courier: an SMS is sent asking you to call the carrier to fix a time.

Ideal if there is not always somebody around at the location to take delivery.

Check your messaging service! You will be automatically contacted by SMS ; it's up to you to call back the carrier. Fixing a date involves an additional delay of at least 24 hours ; and an all-day availability (no specific time slot).

€ 0

## Scheduled delivery

For delivery on a specified date.

Once your order is ready to be dispatched, specify your desired delivery date.

Minimum request 72 hours in advance. Delivery round on the day; fixed times are not possible.

+ 50 %

## ATTENTION

All deliveries are made from monday to friday. The pallets unloading is included only with a "delivery by courier" or with "tailgate option". In that case, pallets are unloaded next to the lorry. Depalletization, handling up to the installation site, unpacking and putting into service of the products are not included in the delivery service. The carriers are not responsible for nonreturnable pallets and packaging waste.

**The feasibility of non-standard delivery has to be study and costing from a service provider.**