



STEELAB

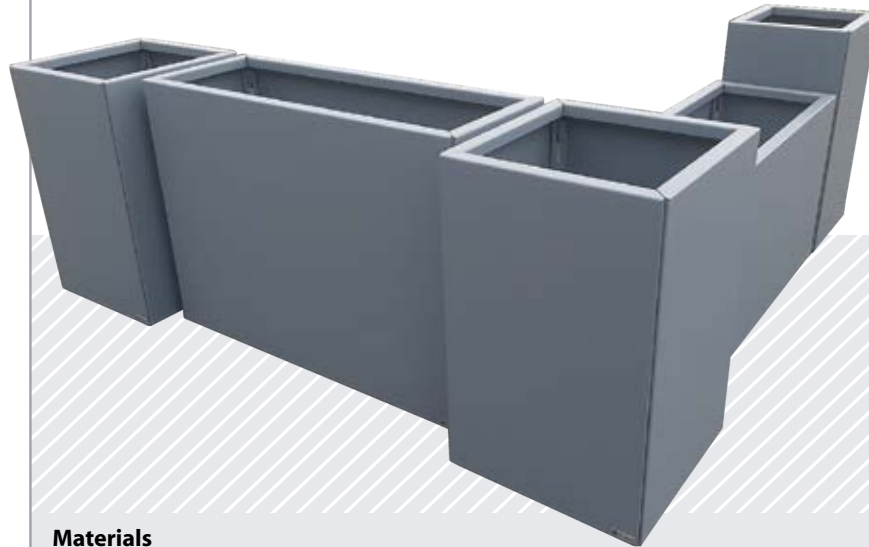
STEELAB
a brand
ATELIER SO GREEN

www.ateliersogreen.com

contact@ateliersogreen.com

T - 33 (0)2 47 65 13 62

Création Jean Claude Joly sarl
9, rue Allaire - ZA la Canterie
37800 Ste Maure de Touraine
FRANCE



Materials

Aluminium 3 or 4mm thick depending on the dimensions.

A naturally resistant, lightweight and durable material, aluminium is a relevant choice for planter fabrication.

Variations are available in Z275 galvanised steel, Magnelis®, stainless steel or Corten®.

Finishes

The side panels are painted before assembly, on their external faces and extended returns. Two finishes are available, depending on the constraints of the project:

- Liquid paint - Surface treatment / Epoxy primer / Polyurethane finish and varnish;
- Powder coating - Surface treatment / Epoxy primer / Polyester finish.

The SAA range offers a meticulous finish, with assemblies that have no visible fasteners and notches that have been carefully treated for optimum finish.

Water management

The bottom is draining, with water evacuated underneath the planter around its perimeter.

As an option, various horticultural systems are available offering good drainage and a water reserve. Sidewall insulation can be added to slow down heat exchange of the metal walls, thereby limiting water evaporation.

Vertical Drainage

We recommend implementing vertical drainage along the side walls as it provides benefits both for the planter and its growing area. Optionally, the planter can be pre-equipped with a high-performance drainage mat to ensure proper ventilation of the growing medium and to provide thermal and chemical separation between the plants and the lateral walls.

Installation

The planters are delivered assembled. However, if access is a problem, they can be supplied dismantled for on-site assembly.

Installation is performed with a distributed load. Anti-puncture pads concealed under the plant tray are provided for this purpose.

As an option, installation can be carried out on adjustable pedestals / feet or on **handling castors**, either **concealed** or **visible** depending on requirements.

SAA - Assembled Planter

Presentation

Aluminium planter made up of panels assembled without welding, forming a neatly finished monolithic planter. Made in France and bespoke to your dimensions.

Description

The base of the planter rests on concealed load-distribution buffers.

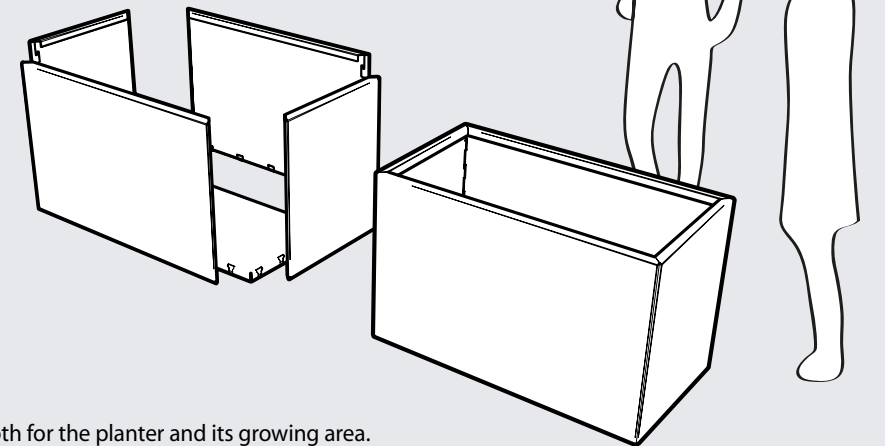
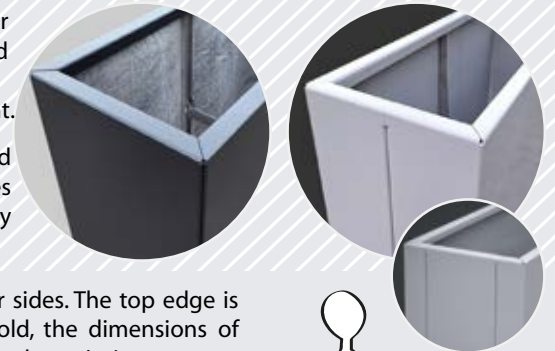
The side panels are supported and held by this base, without any contact with the ground.

The side panels are joined together **in mitre** for 3mm aluminium and **laterally** for greater thicknesses. An EPDM foam gasket seals the joint.

Fasteners ensure positioning and tightening. A locking rivet secures each assembly. The whole assembly is concealed inside the plant tray.

The panels are folded on their four sides. The top edge is treated with a fold and counter-fold, the dimensions of which are adjusted according to the planter's size.

The bottom fold forms a hollow joint with the floor. Its slightly open angle directs water run-off towards the underside of the pot.



Presentation

The STEELAB SAA-L welded-free assembled aluminium planters extend the range to create long and harmonious linear arrangements, offering a unified aesthetic throughout the entire composition.

In a linear configuration, the invisible assembly of the lowered side partitions gives the solution an excellent price/finish ratio.



Description & Operating Principle

Three types of custom-made modules can be combined to create any configuration :

- SAA-LE end module : one lowered partition, one full-height partition ;
- SAA-LC central module : two lowered partitions for double continuity ;
- SAA-LA corner module : ensures continuity for angled linear layouts.

Assembly & Alignment

SAA-L modules are manufactured with precision to ensure alignment quality, and a hollow joint at the junction of planters enhances the visual result. Modules may be fixed to one another. Each element remains independent to facilitate maintenance or replacement.

Lowered Partitions

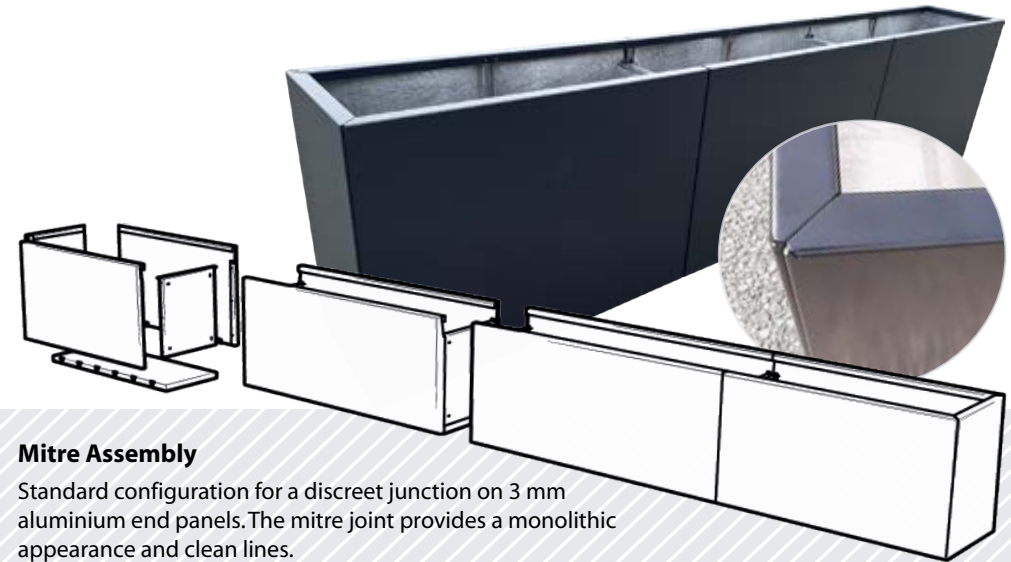
The reduced height of the partitions relative to the upper edge of the planter provides continuous mulching and a unified vegetation effect. Their interfaces with the front and rear panels are set back for perfect concealment.

Depending on project needs, removal of the intermediate partitions can be studied.

Structure & Finishes

The modules retain the welded-free assembly construction specific to the SAA range, along with the same finishes, options and material variations.

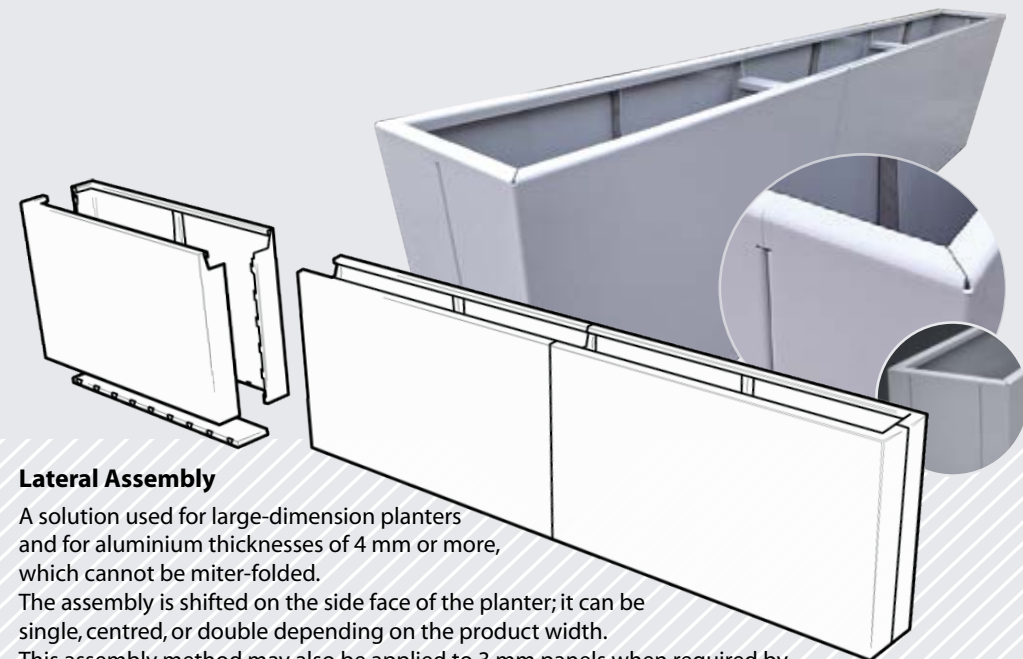
SAA-Linear - Assembled Planters



Mitre Assembly

Standard configuration for a discreet junction on 3 mm aluminium end panels. The mitre joint provides a monolithic appearance and clean lines.

As with the rest of the range, the mitre joints are mechanically locked from the inside by an invisible tightening system, supplemented with an EPDM foam gasket for watertightness.



Lateral Assembly

A solution used for large-dimension planters and for aluminium thicknesses of 4 mm or more, which cannot be mitre-folded.

The assembly is shifted on the side face of the planter; it can be single, centred, or double depending on the product width.

This assembly method may also be applied to 3 mm panels when required by the project, in particular for aesthetic reasons or to optimise material nesting. The tightening and fastening system remains unchanged.

STEELAB
a brand
ATELIER SO GREEN

www.ateliersogreen.com

contact@ateliersogreen.com

T - 33 (0)2 47 65 13 62

Création Jean Claude Joly sarl
9, rue Allaire - ZA la Canterie
37800 Ste Maure de Touraine
FRANCE