



STEELAB



## SPA - Planter with Removable Cladding Panels

### Presentation

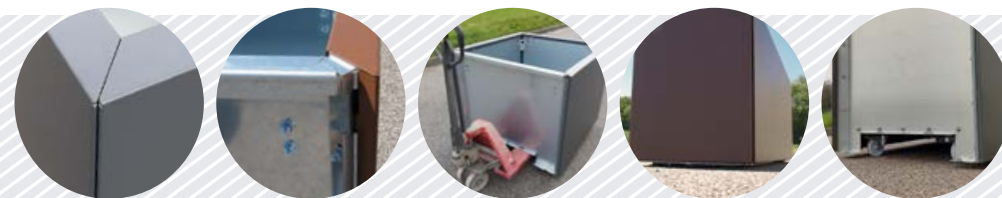
Made-to-measure planter consisting of a **functional growing tray** with removable finishing panels on the visible sides. This configuration provides the best possible response to the most demanding operating constraints, while maintaining a sober, uncluttered design. Without visual impact, the growing tray can be adapted to accommodate a wide range of functions.

**Removable claddings** offer numerous advantages for sites requiring specific management, maintenance, or servicing conditions. Additional panels can be used for temporary customisation or to facilitate maintenance operations. Conversely, a single set of external panels can be combined with several planting containers for seasonal rotation.

### Description

The growing tray is made up of raw galvanised steel panels, folded and then assembled using galvanised steel bolts. Rivets may be used for smaller containers where dismantling is not intended. Additional gluing can be used to make the growing tray watertight. Anchors for guy wires are fitted to the 4 top corners.

The removable cladding panels are made from galvanised steel, folded and then powder-coated. The top edge is finished with a fold and counter-fold that overlapping the planting container. Hooked onto the grow trough, they cover it perfectly on all visible sides. A vandal-proof locking screw prevents inopportune removal.



### Finishes

The cladding panels are painted on all exterior faces and extended returns. Powder coating : Surface treatment / Epoxy primer / Polyester finish.

### Installation

SPA plant containers are initially offered with **adjustable pedestals** and **pallet truck handling**.

They can be supplied in a number of other configurations : adjustable feet ; distributed load with anti-puncture buffers ; or **handling castors**.

### Water management

One or more drain holes are provided at the bottom of the plant tray and fitted with a drip guard. The diameter can be adapted to the installation. As an option, a wall feed-through can be provided to catch any dirty water.

Various horticultural systems can be integrated to achieve drainage and water-reservoir functions. By forming a double skin, the cladding panels naturally insulate the planting area, thereby limiting the effects of solar radiation on evaporation.

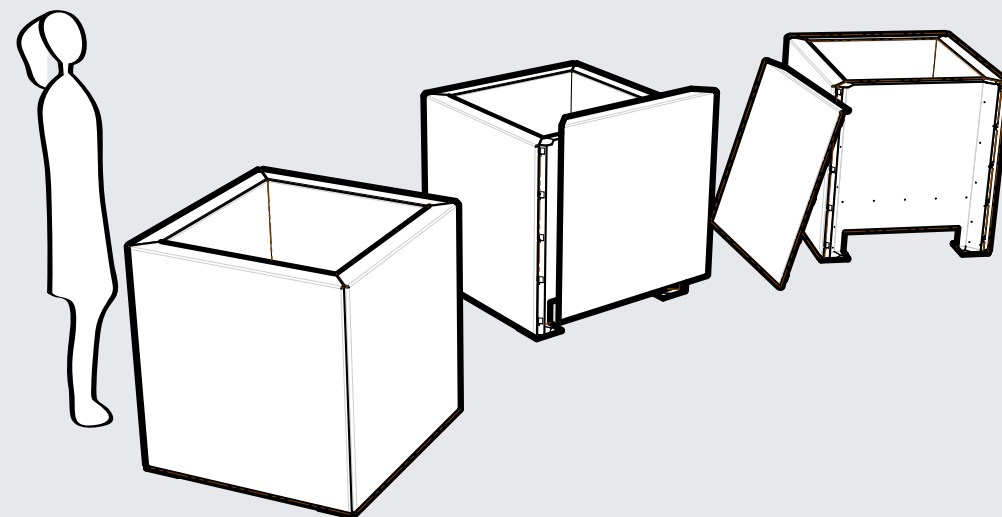
### Vertical Drainage

We recommend implementing vertical drainage along the side walls as it provides benefits both for the planter and its growing area.

Optionally, the planter can be pre-equipped with a high-performance drainage mat to ensure proper ventilation of the growing medium and to provide thermal and chemical separation between the plants and the lateral walls.

### Materials

Robust and economical, Z275 galvanised steel is an ideal solution for assembled planters, particularly when the powder-coated cladding is separate from the growing area. The SPA range uses it in thicknesses of 2 to 3mm, depending on the dimensions. Variations can be offered in Magnelis®, Corten®, stainless steel or aluminium when weight constraints are significant.



STEELAB

a brand

ATELIER SO GREEN

[www.ateliersogreen.com](http://www.ateliersogreen.com)

[contact@ateliersogreen.com](mailto:contact@ateliersogreen.com)

T - 33 (0)2 47 65 13 62

Création Jean Claude Joly sarl  
9, rue Allaire - ZA la Canterie  
37800 Ste Maure de Touraine  
FRANCE



STEELAB

# SPA-Linear - Planters with Removable Cladding Panels

## Presentation

In its linear version, the customised STEELAB SPA-L range combines growing trays into a single unit, with only the visible sides covered with removable finishing panels. This creates long, harmonious alignments and a unified visual reading of the furniture along its full length. Each module remains independent and individually offers the many features specific to the SPA range.

## Description & Operating Principle

Three types of bespoke modules can be combined to create any configuration :

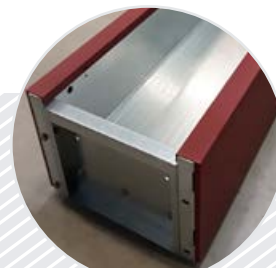
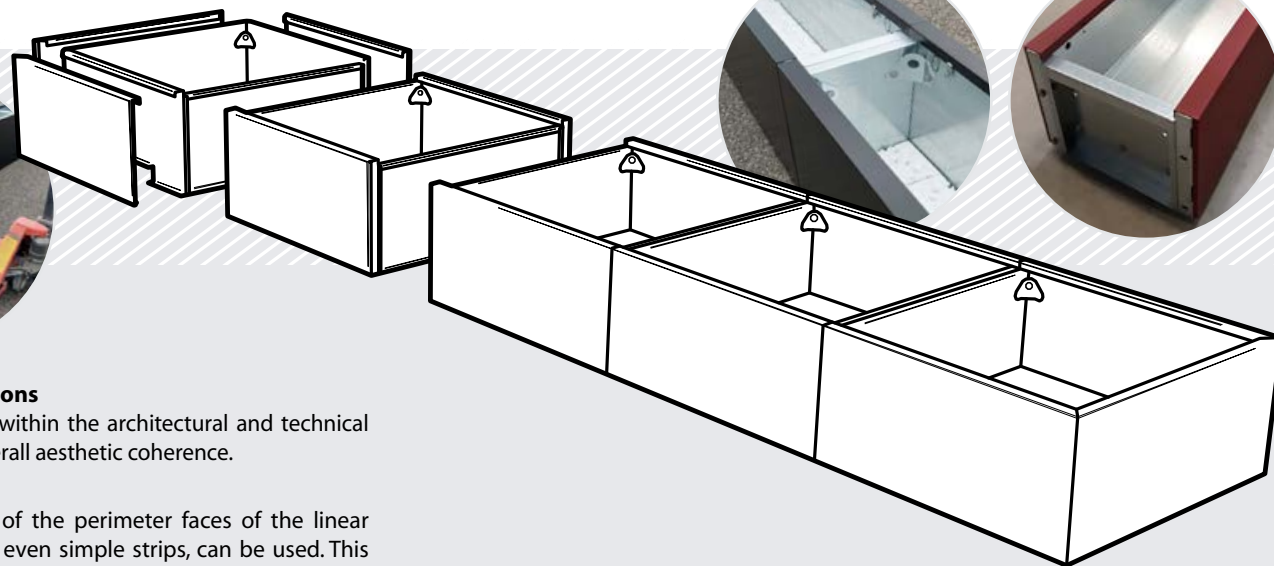
- SPA-LE : end module with a single connection side ;
- SPA-LC : central module with two connection sides ;
- SPA-LA : corner or transition module for direction changes.

## Assembly and visual continuity

SPA-L modules are aligned using a mechanical fixing system that ensures neat cladding junctions. Each container remains individually removable, with fixings accessible directly behind the cladding panels.

## Structure and Finish

SPA-L modules incorporate all construction details of the SPA range, along with all available finishes, options and material variants.



## Adapting Cladding Panels to Installation Conditions

This flexibility optimises the integration of planters within the architectural and technical context of the project, without compromising the overall aesthetic coherence.

### Installation against a Wall or an Acroterion

Cladding can be limited to only the visible parts of the perimeter faces of the linear structure. In this case, panels of reduced height, or even simple strips, can be used. This reduces weight and costs without any visual or technical impact.

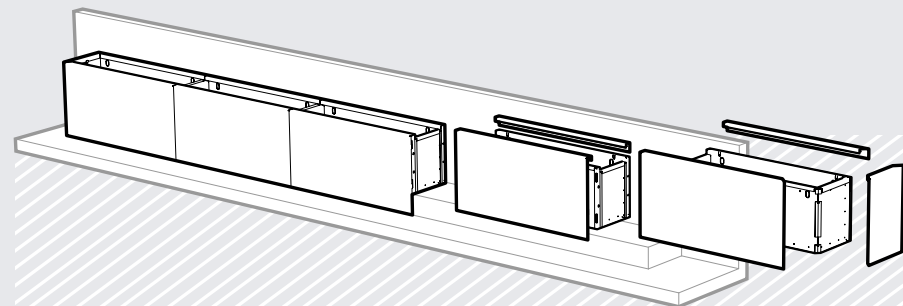
### Installation recessed into the Ground

When containers are partially recessed into the finished ground level, the cladding height may be reduced to finish flush with the surface.

### Installation on Brackets or Raised Supports

In certain configurations, such as overhang installations, mounting on a low wall, or on a metal structure, the cladding can be extended below the support level in order to completely conceal the planter's support structure.

The installation of planters attached to the acroterion via brackets is both an attractive solution and particularly effective in meeting load constraints and ensuring access to waterproofing details.



**STEELAB**

a brand

**ATELIER SO GREEN**

www.ateliersogreen.com

contact@ateliersogreen.com

T - 33 (0)2 47 65 13 62

Création Jean Claude Joly sarl  
9, rue Allaire - ZA la Canterie  
37800 Ste Maure de Touraine  
FRANCE